

# Part III

## Tools & Options

In the second part, you learned how to create and edit complex templates including how to change tablet properties, create regions, apply styles, work with combinations, import and export files and print your templates.

In the next three chapters, you'll learn the tools and options for building templates and configuring the Editor for optimum use:

- n How to compile templates, trace regions and execute templates.
- n How to alter the Editor's display, use tablet guides, create file backups and add comments to your templates.
- n How to cut, copy, paste, view and undo actions using the Windows clipboard.

# Chapter 10

## Using Tools

### Compiling

The Editor includes an integrated compiler which translates the graphical specifications of your template into a Virtual Tablet Interface command file executable by the Virtual Tablet Interface utilities and drivers. A key advantage of the Virtual Tablet Interface is that these files, once created, will run on any supported digitizer or host system without modification or recompiling.

The process of converting your template into a command file begins when you choose Compile command from the Tools menu. The compiler uses two passes in which the first is used for error checking and the second pass for creating the command file. This allows you to review any errors encountered during the first pass and correct them prior to creating the command file.

When you choose the Compile command or press the F11 key, you are asked to save any changes to the template file. This ensures your more recent changes are saved in the event of a mishap and that the template file on disk matches the command file should you need to reference them later. If you have not saved your template, the Compile command will be disabled.

### Compiler Errors

During the first pass, the template is scanned for logic errors which, if found, are reported in the Compile dialog box. Otherwise, a message box will inform you the command file has been created.



At this point, you may cancel compiling or ignore the errors. If you continue compiling, a command file will be built on disk containing the information and instructions necessary to direct the drivers and utilities on how to execute your template. Template command files use the extension .VTT.

In general, compiler errors reported in the Compile dialog box should not be ignored. For example, if you do not specify a pointer region, your system pointer will not work properly under Windows or DOS. Also, multiple pointer regions are ignored after the first one is encountered and may not achieve the results you intend. Finally, if there are one or more overlapping regions, their behavior will be unpredictable in the areas of overlap.

## Tracing Regions

The Editor's Trace command in the Tools menu allows you to create regions by drawing or tracing them directly from a digitizer. In order to enter trace mode, you must have a digitizer attached to your system and the Windows library VTABLET.DLL installed in your system directory. You do not need to specify the Windows driver as the mouse pointer but any active templates executing under the Virtual Tablet Loader are temporarily disabled.



When choosing the Trace command, the cursor changes to the Trace tool shown here. Regions created in trace mode inherit default attributes - their styles and template functions can be edited after you are finished tracing.

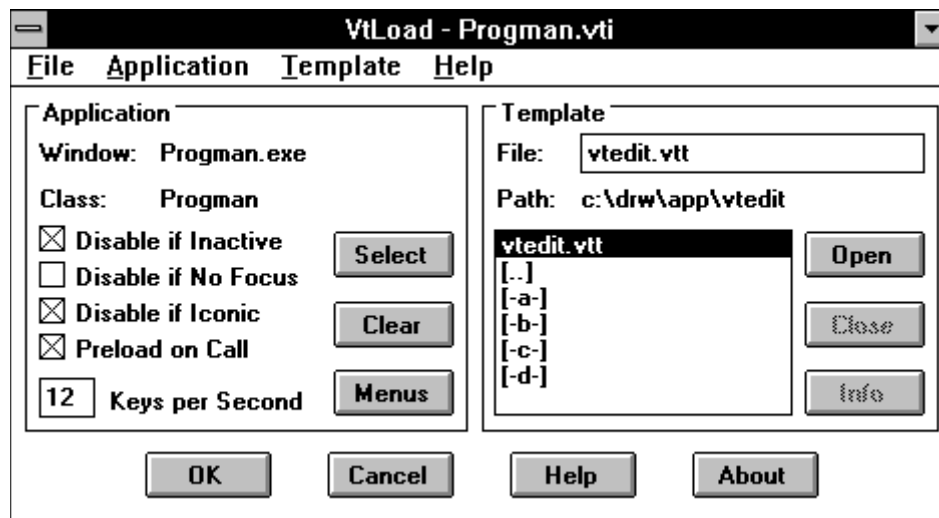
When you are finished tracing, press the ESCAPE key. If you are in the middle of tracing a region, it will be discarded. The Editor's Undo capabilities are fully supported should you change your mind and wish to delete the regions created while tracing. Trace mode is automatically ended when you switch to another window or choose another command.

*Note:* While you are tracing, the Windows pointer will be disabled if the Windows library VTABLET.DLL was specified as the Windows mouse driver. If disabled, it will be restored to its previous state after you are done tracing.

## Executing Templates

The Virtual Tablet Loader is used to create Virtual Tablet Information (.VTI) files which can automatically load your Windows applications and their templates. To access the Loader from within the Editor, choose Execute from the Tools menu or press the F12 key.

You can also start the Loader by clicking its icon in the Virtual Tablet group or on a Virtual Tablet Information file icon created when you save a file. The Loader is displayed on the Windows desktop as shown below:



### Selecting an Application

Normally, you will associate a Windows application with a template command file. To do this, click the Select button in the Application section or choose Select from the Application menu. The cursor will change to a bomb-sight just like the Build tool used with the Build command.



Position the cursor over the application's window or icon and press the left mouse button. The bomb-sight will disappear and the cursor change back to a normal pointer. If you miss the application's window, click the Select button again to

select the right window. You may continue selecting target windows until you are satisfied the right window has been selected.

After you select the application's window, the Loader will update the application's name and window class in the fields labeled Name and Class. You may clear the selected window and designate the Windows desktop by clicking the Clear button or choosing Clear from the Application menu.

## Menus

To view the menu structure of the target application, click the Menus button or choose Menus from the Application menu. The About Windows dialog box is displayed and allows you to scroll through the windows menu structure and accelerator keys.



To dismiss the About Window dialog box, click the OK button or press ENTER.

## Application Options

You'll notice several options in the Application section become enabled after you selected an application's window. These include fields for controlling how the template interacts with the application under certain conditions.

**Disable if Inactive** This option disables the template temporarily while the target application is inactive. The pointer will continue to operate normally, but template regions will not send keystrokes to the application. This option should generally be checked unless the application can be activated by command.

**Disable if No Focus** This option disables the template temporarily while the target application does not have the input focus. The pointer will continue to operate normally, but template regions will not send keystrokes to the application. This option should generally be checked unless the application can safely process commands without having the keyboard focus.

**Disable if Iconic** This option disables the template temporarily while the target application is in an iconic state. The pointer will continue to operate normally, but template regions will not send keystrokes to the application. This option should always be checked unless the application can be activated and maximized by command.

**Preload on Call** This option instructs the Loader to load and execute the application from a Virtual Tablet Information file specified on the command line or by double-clicking its icon. The Loader will execute the application if not already open on the desktop and execute its associated template. The Loader will then minimize itself to an icon before setting the input focus to the application.

**Keystroke Rate** The rate at which template keys are sent to the target application may be changed by entering a new value in the Keystrokes Per Second field. The value can range from between 1 and 10 and defaults to 5 per second. Higher rates provide faster application response time while slower rates are useful for demonstrations.

## Choosing Command Files

After selecting a target window, you must specify a template command file to use with the application. This is done through the Template section of the Loader's dialog window and is nothing more than the familiar Open dialog box found in many Windows applications.

To choose a template command file, click on the filename in the list box under the words "Files In". The File Name edit box should change to reflect selected filename. If not, use the list box to change the drive or path until the file name can be selected. Then, click the Open button or select the Open File command from the Template menu by pulling it down or pressing the ALT+T,P keys. If there are no file errors, the Open button should become disabled, and the Close and Info buttons enabled.

If you make a mistake selecting the command file, click the Close button or choose Close from the Template menu. You can then select another command file as described above.

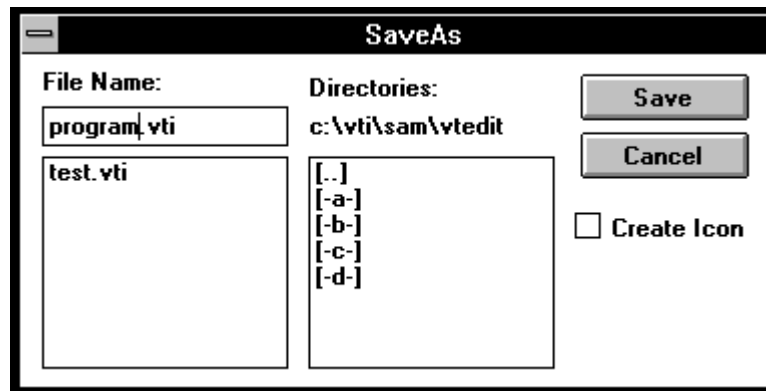
## File Information

Command files often contain comments by the template's creator with instructions for use or any special restrictions. To view these comments, click the Info button or choose Info from the Template menu. The About Template dialog box is displayed showing the file format, version number, creator's name and company, and comments, if any.

## Saving the Configuration

To save the target window configuration and its template in a Virtual Tablet Information file, choose Save from the File menu or press the CTRL+S keys. Since this is a new file, you will be presented with the Save As dialog box.

Enter the file name and click the Save button or press ENTER. The file will be saved on disk and can be used to load both the application and its template file automatically each time you start Windows. If you change your mind, click the Cancel button or press the ESCAPE key. Virtual Tablet Information files use the extension .VTI.



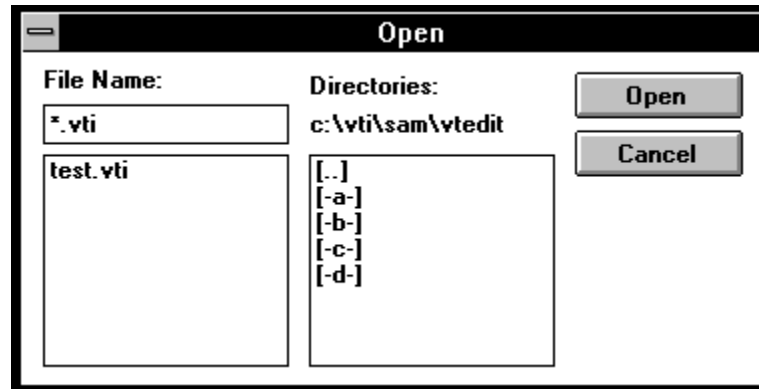
**Create Icon** You may also have the Virtual Tablet Loader create a Program Manager icon in the Virtual Tablet group by checking the "Create Icon" option. Then, each time you wish to start both a template and its application, double-click on the icon in the Virtual Tablet program group.

## Accepting the Setup

To tell the Virtual Tablet Loader to accept your changes and put them into action, click the OK button or press ENTER. The Loader will minimize itself down to an icon and the template will become activated. To cancel your changes, click the Cancel button or the size arrow to minimize the Loader to an icon.

## Opening Existing Setups

To can open and edit saved configurations by choosing Open from the File menu or pressing the ALT+F,O keys. This displays the now familiar Open dialog box.



At the top of the dialog box are the words "File Name" followed by a field which allows you to type in the full path name of the file, or a DOS file specification including the wild cards '\*' and '?'. If you are not familiar with DOS conventions for specifying disk, directory and filenames, consult your DOS manual or Windows User's Guide.

Another way to locate the file is to change the current drive and directory by double-clicking on the selections in the directories list box. As you change the drive or directory, the new path is displayed in the field under "Directories:". Once you have found the file, either double-click on its name, or single-click to place it in the File Name field and then click the Open button or press ENTER. Virtual Tablet Information files use the extension .vti.

You may cancel opening a file at any time by clicking the Cancel button or pressing the ESCAPE key. Canceling the Open dialog box leaves your setup unchanged.

## Exiting the Loader

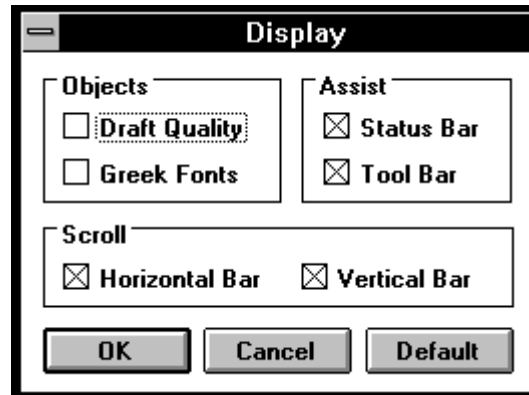
To exit the Loader, choose Exit from the File menu or press the ALT+F4 keys. Any open templates and Virtual Tablet Information files you are working with will be closed and the mouse pointer returned to system use if originally specified as VTABLET.DLL. If there are any changes to the current setup, you will be prompted to save them first.

# Chapter 11

## Changing Options

### Display

The Editor's may be configured to hide imported graphics files, unsupported fonts and scroll bars. To change the Editor's display, choose Display from the Options menu or press the F8 key. The Display dialog will be displayed.



**Draft Quality** Draft Quality inhibits graphics-intensive drawing operations including the display of imported graphics files, color fills and shadow outlines, and can significantly increase the screen drawing speed. It is useful if you are editing a large, complex template and do not need to see an exact representation of the template.

**Greek Fonts** Greek Fonts governs whether the Editor substitutes gray boxes for the height and width of labels. If you have installed a font manager or a version of Windows supporting scalable fonts, this command is not necessary.

**Scroll Bars** Scroll bars allow you to pan the template left and right (horizontal scroll bar) or up and down (vertical scroll bar). If you are working in one area of the screen for a period of time, you may find it useful to hide one or more scroll bars to increase the size of the client area.

**Status Bar** The Status Bar appears below the Editor's window and provides short help on menu commands, the X and Y location of cursor in the active area, the current zoom level, object (tablet, combination or region) selected, and whether draft quality, font greeking and metric measurements are in effect.

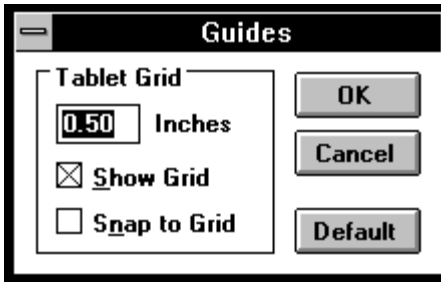
**Tool Bar** The Tool Bar appears below the Editor's menu bar and provides quick access to commonly used commands. These commands from left to right on the toolbar are as follows: New, Open, Save, Cut, Copy, Paste, Undo, Zoom In, Zoom Out, Zoom Template, Zoom Special, Properties, Styles, Combine, Break Apart, Display, Guides, Backups, Compile, Build, Trace, Execute and Help.

After changing any options, click the OK button or press ENTER. To cancel changing the display options, click the Cancel button or press the ESCAPE key. If you would like to make the display options the default each time you start the Editor, click the Default button.

### Guides

Tablet guides provide a convenient way to locate and place objects within the active area. They consist of a tablet grid which may be displayed and to which object coordinates may be snapped. To configure the guides, choose Guides from the Options menu or press the F9 key. The Guides dialog box is displayed.

After changing any options, click the OK button or press ENTER. To cancel changing the display options, click the Cancel button or press the ESCAPE key. If you would like to make the guide options the default each time you start the Editor, click the Default button.



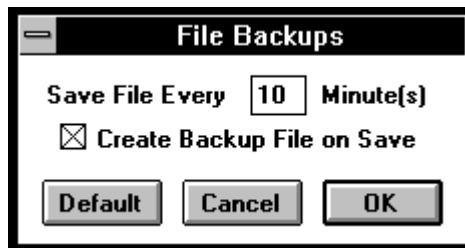
**Grid Size** To change the tablet grid, enter either a new grid size, select whether the grid is displayed on the active area and whether the cursor is snapped to grid intersections. The grid size must be greater than the minimum region size and less than half the minimum axis of the active area.

**Show Grid** If you select the Show Grid option, the grid will be displayed starting at the lower-left corner of the active area extending right and up by the grid unit of measurement.

**Snap Grid** If you select the Snap Grid option, each time you begin a cursor selection, the cursor will be snapped to the nearest grid intersection whether the grid is visible or not.

## Backups

File backups can help protect your template from accidental loss of data. You should use backups to prevent over-writing older file versions and loss of your work in the event your system crashes. To change the backup options, choose Backups from the Options menu or press the F10 key. The Backups dialog box will be displayed.



After changing any backup options, click the OK button or press ENTER. You may cancel changing the backup options by clicking the Cancel button or pressing the ESCAPE key. If you would like to make the backup options the default each time you start the Editor, click the Default button. The backup options will be saved in program memory and the Editor's configuration file.

## Auto Saving Files

The auto save interval allows you to set a timer which prompts you to save your template file at specified intervals up to 60 minutes. The default value is 10 minutes. At the conclusion of each interval, you will be prompted to save the file provided it has changed since the last interval. To disable the auto save feature, enter a time interval of zero.

## Create Backups

Create Backup allows you to specify whether a backup of the file is created each time it is saved and is useful protection against accidental writes to your file. Each time you save your template, the original disk version is renamed to the file name plus the extension .BAK prior to saving the changes.



If you accidentally save, and therefore over-write, a valuable template file which you did not wish to change, immediately exit the Editor and copy the file name plus the extension .BAK to the original file name using the extension .VTE. Generally, it is a good idea to keep at least one backup copy of your template on the disk at all times.

## Comments

Comments are a convenient way to add text to your template and command files such as copyright notices and version information. To add or edit comments in your command files, choose Comments from the Options menu or press the ALT+O,C keys. The Comments dialog box is displayed.



This dialog box consists of a multi-line edit control and vertical scroll bar which you may use view text which extends beyond the borders of the control. The total comment size is limited to 1024 characters including carriage returns and linefeeds. For information on using edit controls, refer to the Window's User Guide.

When you have completed editing your comments, click the OK button to accept the changes. Otherwise, click the Cancel button or press the ESCAPE key to exit the dialog without changing the comment text. You may also view comments from compiled templates using the Virtual Tablet Loader's Info command.

# Chapter 12

## The Clipboard

The Windows clipboard is a temporary storage location that is always available when you want to transfer information between templates. You can cut or copy information from one template to the clipboard and then transfer that information from the clipboard into another template.

The Editor uses a proprietary clipboard format which means clipboard information can only be used with the Editor itself and cannot be pasted into other applications. If you need to do this, use the Export command and then import the graphics file into the application.

### Undo

The Undo command allows you to return your template to the state it was in prior to the last command or action performed. You can use Undo anytime you accidentally do something that you wish you hadn't. The following operations can be used with the Undo command:

- n All mouse commands including sizing, scaling and stretching a selection.
- n Pasting and cutting with the clipboard.
- n Clearing or deleting a selection.
- n Formatting properties or styles.
- n Combining or breaking regions.
- n Alignment of regions and combinations.
- n Importing all file types.
- n Duplication of regions and combinations.
- n Tracing regions.
- n Changing comments.

### Cutting

To remove a selection of regions and combos from the template and place them on the Windows clipboard, choose Cut from the Edit menu or press the SHIFT+DELETE keys. This provides a convenient way of moving regions and combinations from one template to another.

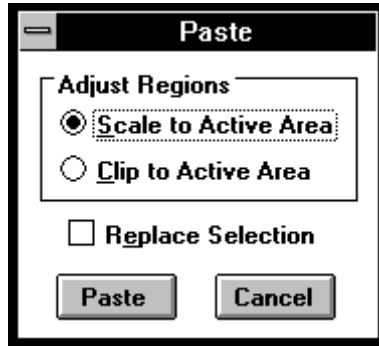
### Copying

To copy a selection of regions and combos from the template and to the Windows clipboard, choose Copy from the Edit menu or press the CTRL+INSERT keys. This provides a convenient way of copying regions and combinations from one template to another.

## Pasting

To paste a previously copied or cut selection of regions and combinations into the current template, choose Paste from the Edit menu or press the SHIFT+INSERT keys. The Paste dialog box is displayed.

By default, the Paste command ignores the current selection of regions and combinations on the template and sets the selection after the paste to the new ones. However, if you wish to replace the current selection with the contents of the clipboard, select the Replace Selection option.



Select the method by which differing active areas between the clipboard and template are resolved. For most operations, Scale to Active Area should be used in order to guarantee the clipboard contents are fully pasted. However, if you choose Clip to Active Area and one or more regions or combinations extend beyond the active area, they will be clipped to the active area.

After choosing the method of pasting and whether to replace the current selection, click the Paste button or press ENTER. To cancel pasting, click the Cancel button or press the ESCAPE key.

## Viewing

To view the contents of the clipboard, choose Clipboard from the Edit menu. The CLIPBRD.EXE utility will be executed which allows you view and save the contents of the clipboard. For more information on using this utility, refer to the Windows User Guide.